



## Configure your firewall

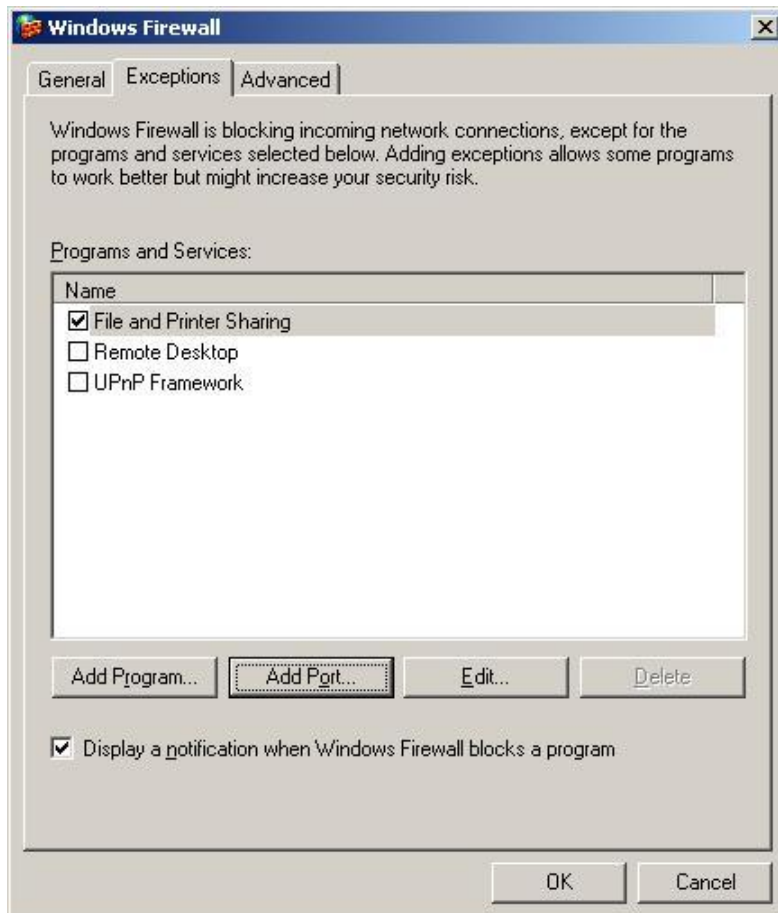
Date: 10-December 2007

Following steps are not required but recommended for usage of **AllMyMusic**.

Per default a firewall will block SQL Server messages. This will prevent **AllMyMusic** to browse for SQL Servers. You can select the name of the local server “**.\SQLEXPRESS**”. If you want to browse for a server the firewall needs to have opened the ports 1433 (TCP) and 1434 (UDP).

See Microsoft article: <http://technet.microsoft.com/en-gb/library/ms175043.aspx>

Following screenshot show the configuration for the “Windows Firewall”





Click the “Add Port” button and enter following information.

**Add a Port** [X]

Use these settings to open a port through Windows Firewall. To find the port number and protocol, consult the documentation for the program or service you want to use.

Name:

Port number:

ICP     UDP

Click the “Add Port” button again and enter following information.

**Add a Port** [X]

Use these settings to open a port through Windows Firewall. To find the port number and protocol, consult the documentation for the program or service you want to use.

Name:

Port number:

ICP     UDP