



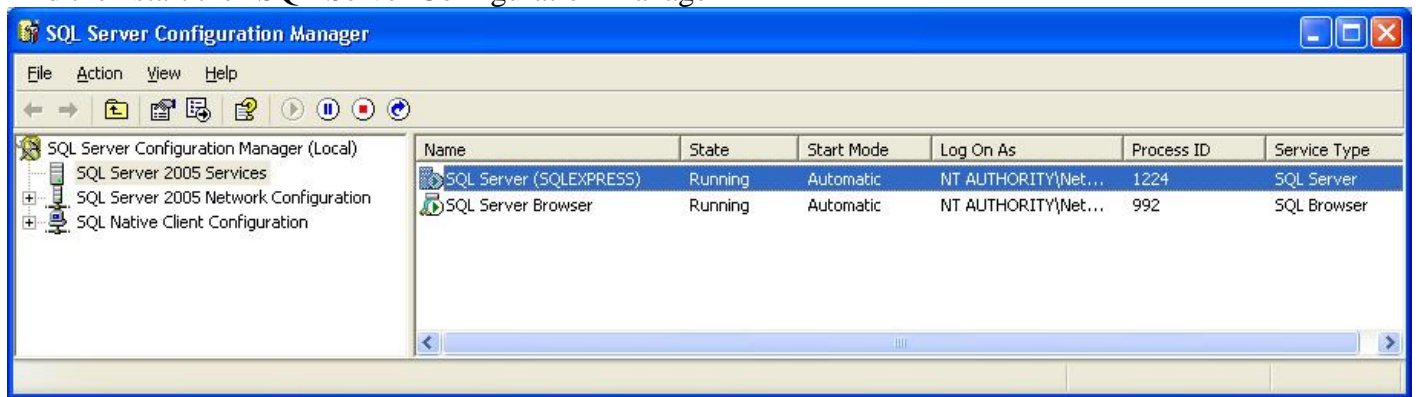
## Configure Microsoft SQL Server Management Studio Express

Date: 27-March 2008

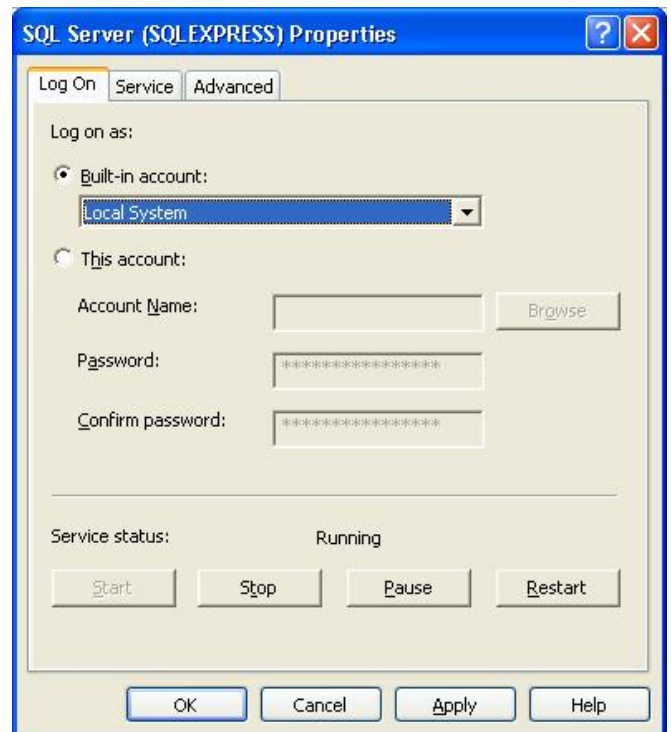
### Enable “Documents and Settings” folder

If you like to save the database somewhere under the “C:\Documents and Settings” folder or respectively under “My Documents”, then the SQL Server service needs to run under the “Local System” account. Per default this service runs under the “Network Service” account.

From the start menu select “Programs”, “Microsoft SQL Server 2005”, “Configuration Tools”  
And then start the “SQL Server Configuration Manager”



Right click the “SQL Server” and select “Properties”  
Select the “Log on” tab.  
Set the “Buil-in account” to “Local System” or alternatively use another account.



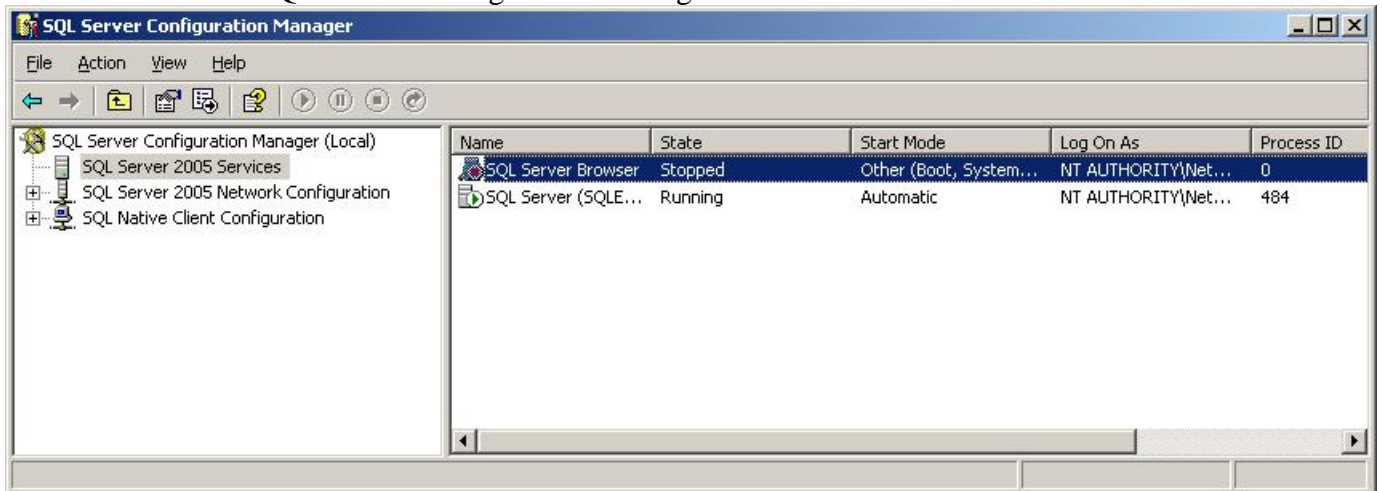


## Enable Browsing

To enable **AllMyMusic** browsing “searching” the new installed SQL Server the following configuration steps must be performed.

If you have a firewall software you additionally need to open ports 1433 (TCP) and port 1434 (UDP).

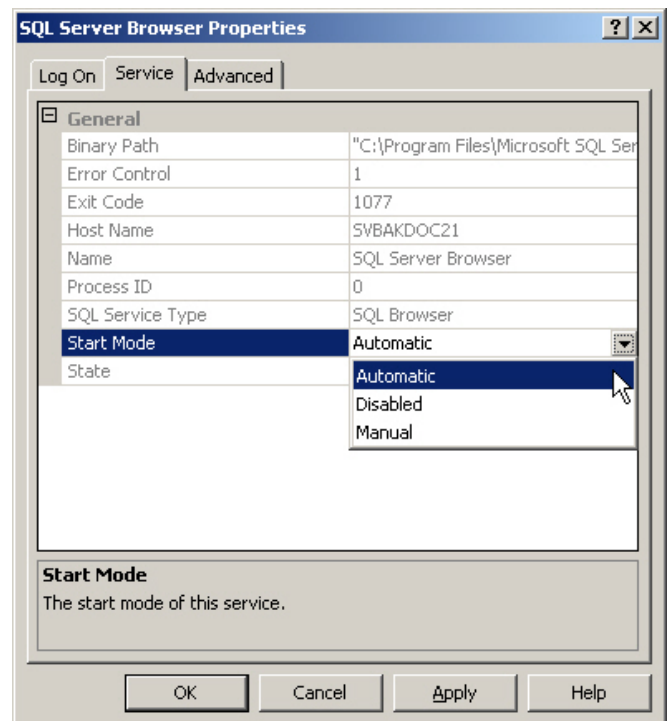
From the start menu select “Programs”, “Microsoft SQL Server 2005”, “Configuration Tools”  
And then start the “SQL Server Configuration Manager”



Right click the “SQL Server Browser” and select “Properties”

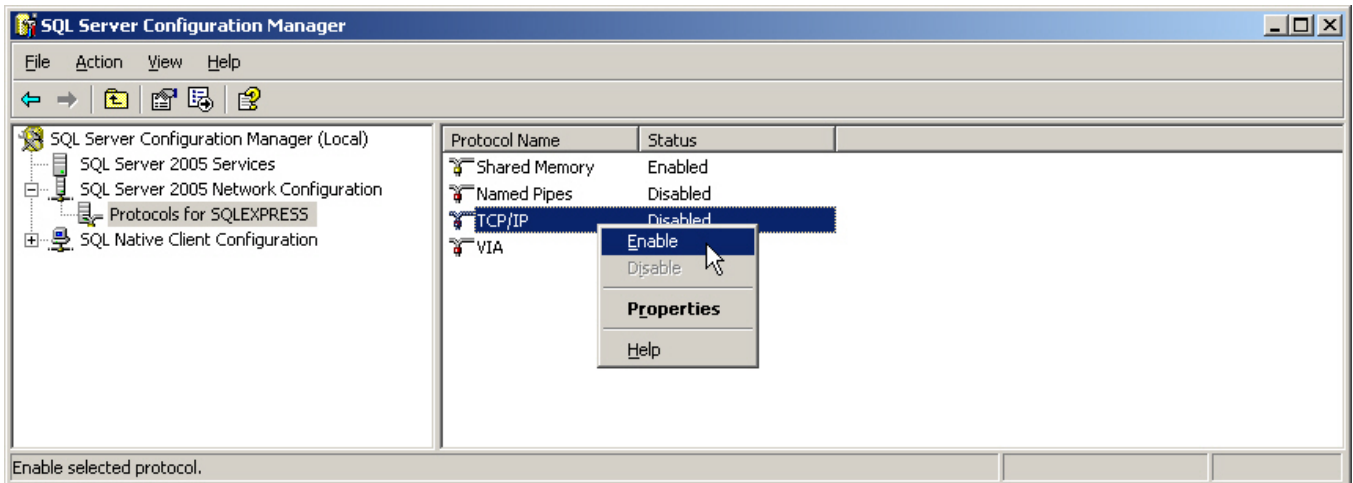
Select the “Service” tab.

Set the “Start Mode” for the “SQL Server Browser” service to “Automatic”





Enable the “TCP/IP” protocol.



Start the “SQL Server Browser”

